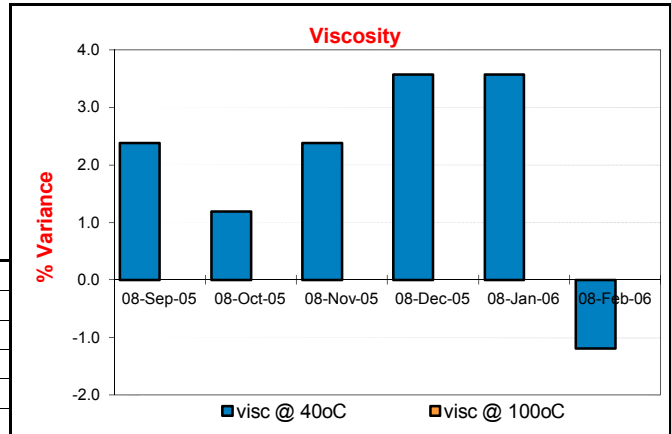


TECHNICAL ADVANCE FOR ECONOMIC GAIN

**NORMAL**

**Wear Metal Report:** 209,600  
**Client:** Demonstration  
**Attention:** Demonstration  
**Machine:** 373 Dozer **ID No:** 373  
**Oil Name:** Multi 15W40  
**Visc@40°C:** 84 **Visc@100°C:** 0 **TBN:** 8  
**Compartment:** ENGINE



Sample Date	8/09/2005	8/10/2005	8/11/2005	8/12/2005	8/01/2006	8/02/2006
Analysis Date	9/09/2005	9/10/2005	9/11/2005	9/12/2005	9/01/2006	9/02/2006
Sample no.	1000	50000	100000	150000	200000	209600
SMU	0	0	0	0	0	11769hrs
Oil Hrs	0	0	0	0	0	0
Oil Changed	No	No	No	No	Unsure	No

Wear Metals	ppm	ppm	ppm	ppm	ppm	ppm	Caut	High	Comments on elevated results
lead	0	1	3	2	0	2	10	16	All elements are below limits, continue with routine maintenance.
iron	5	10	7	7	9	8	30	50	
aluminium	0	0	1	3	1	3	10	16	
copper	3	3	5	3	4	4	18	30	
chromium	0	1	1	0	0	1	9	15	
tin	0	0	0	0	0	0	9	15	
nickel	0	1	0	1	0	1	9	15	

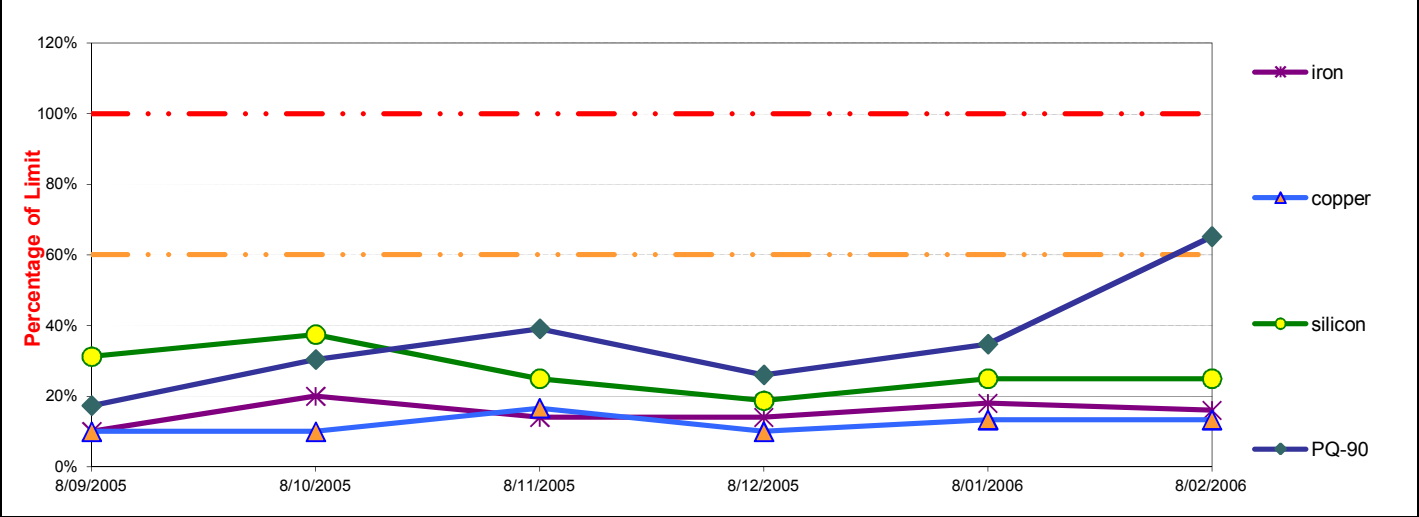
Contaminants	ppm	ppm	ppm	ppm	ppm	ppm	Caut	High
silicon	5	6	4	3	4	4	10	16
sodium	6	8	9	9	8	8	18	30

Oil Additives	ppm	ppm	ppm	ppm	ppm	ppm	Caut	High
magnesium	14	11	12	13	12	12	0	0
zinc	1031	1008	1038	989	964	1091	0	0
molybdenum	0	0	2	3	0	2	0	0
calcium	2164	2176	768	2098	2034	2037	0	0
phosphorous	836	850	1016	756	891	990	0	0
boron	1	1	9	12	15	13	0	0

Infra Red	ppm	ppm	ppm	ppm	ppm	ppm	Caut	High
TBN	0	0	0	0	0	0	-25%	-50%
soot	0	0	0	0	0	0	0	0
glycol%	0	0	0	0	0	0	0	0
water (ppm)	0.00	0.00	0.00	0.00	0.00	0.00	0	0
fuel dilution%	0	0	0	0	0	0	0	0
oxidation	0	0	0	0	0	0	0	0
nitration	0	0	0	0	0	0	0	0
sulphation	0	0	0	0	0	0	0	0

Physical Tests	ppm	ppm	ppm	ppm	ppm	ppm	Caut	High	ISO 4406 - 04	ISO 4406 - 06	ISO 4406 - 14	Count 1ml
water %	0.00	0.00	0.00	0.00	0.00	0.00	0	0	21	18	14	-
PQ-90 mg / ltr	4	7	9	6	8	15	23	38				
visc @ 100oC	0	0	0	0	0	-	+10%	+30%				
visc @ 40oC	86	85	86	87	87	83	+10%	+30%				

**Element Trends Graph**



For enquiries, contact: SINGLETON LABORATORY phone: 02 65712699 fax: 02 65712044 mobile: 0419604431

This wear analysis and oil condition report should be used in conjunction with normal maintenance and evaluated from sample to sample. Every care will be taken in processing samples but no express or implied guarantee is furnished in regard to the continuing operation or condition of this machinery or any part thereof.